

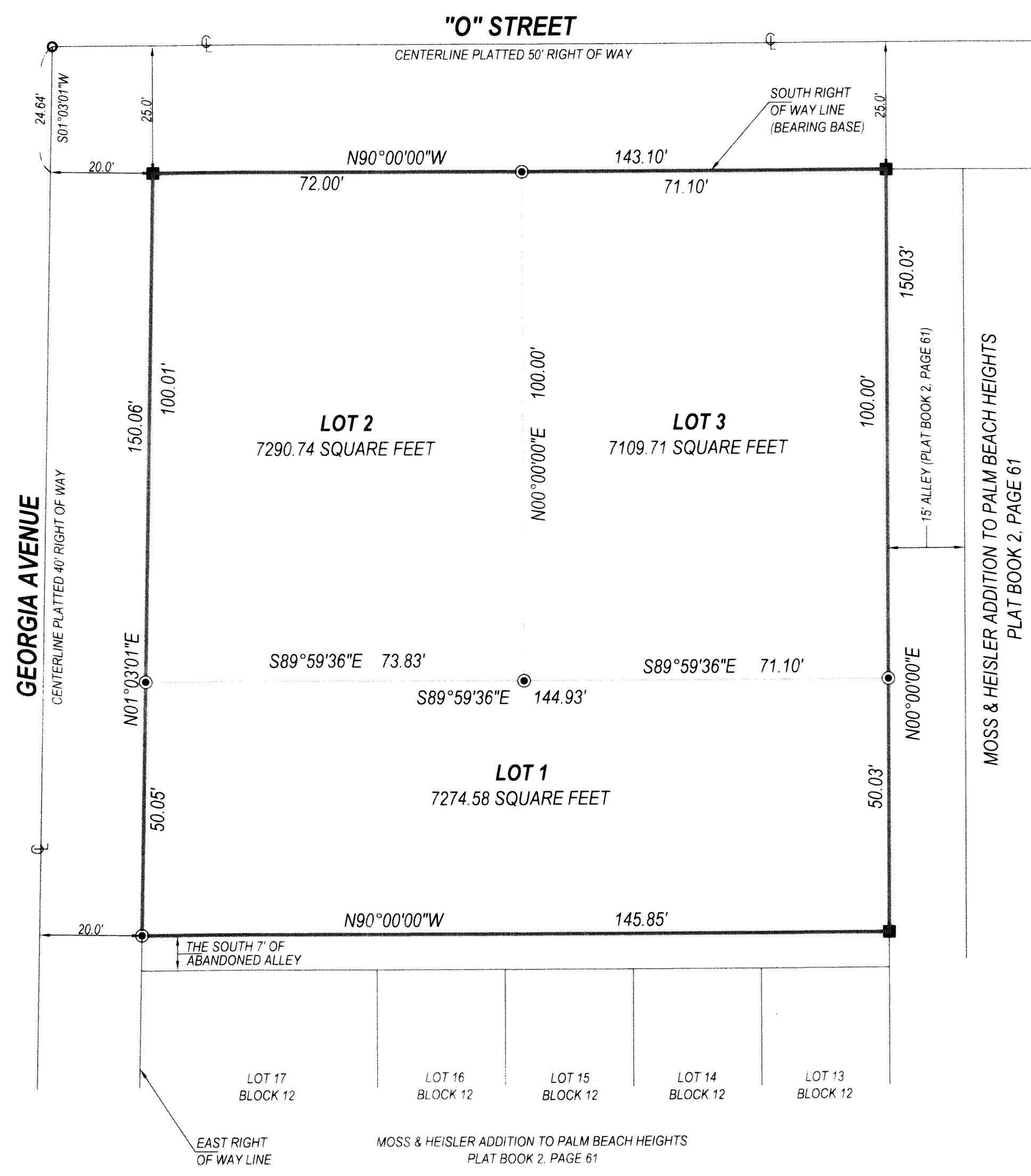
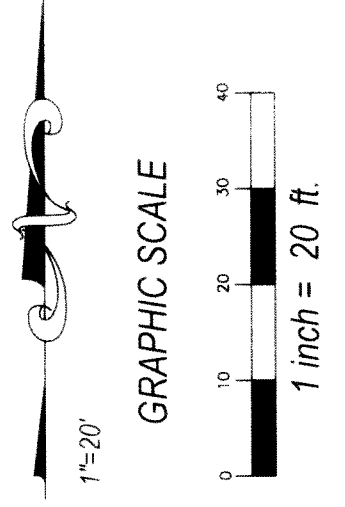
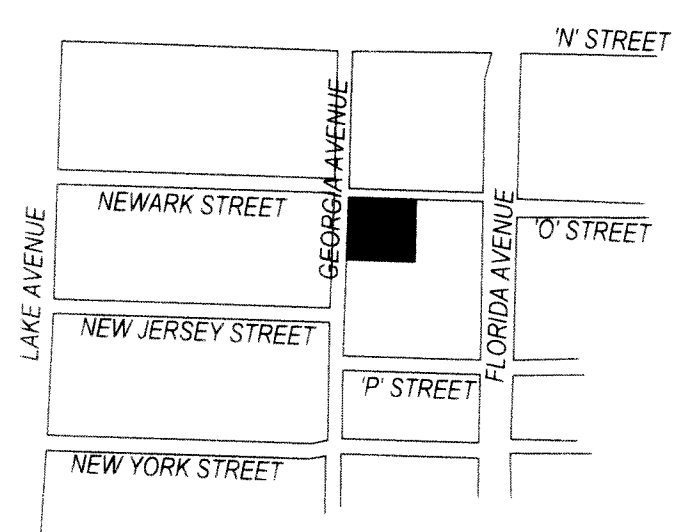
37

STATE OF FLORIDA
 COUNTY OF PALM BEACH
 THIS PLAT HAS BEEN FILED FOR
 RECORD AT _____
 THIS ____ DAY OF _____, 201__
 AND DULY RECORDED IN PLAT
 BOOK _____
 ON PAGE _____
 SHARON R. BOCK
 CLERK & COMPTROLLER
 PALM BEACH COUNTY
 BY: _____

WILLIAMS PLAT

BEING A REPLAT OF LOTS 18, 19, 20, 21, 22, BLOCK 12, AND
 THE NORTH 7' OF THE ABANDONED ALLEY ADJACENT THERETO
 MOSS & HEISLER ADDITION TO PALM BEACH HEIGHTS
 ACCORDING TO THE PLAT THEREOF RECORDED IN PLAT BOOK 2, PAGE 61
 PUBLIC RECORDS OF PALM BEACH COUNTY, FLORIDA.
 SECTION 28, TOWNSHIP 43 SOUTH, RANGE 43 EAST
 LYING IN THE CITY OF WEST PALM BEACH, PALM BEACH COUNTY, FLORIDA
 SHEET 2 OF 2

VICINITY SKETCH
 not to scale



- LEGEND**
- SET 4"x 4" CONCRETE MONUMENT AND BRASS DISK "LB 6788"
 - SET 1/2" IRON ROD AND CAP "LB 6788" OR NAIL AND DISK "LB 6788"
 - FOUND 4"x 4" CONCRETE MONUMENT (PERMANANT REFERENCE MONUMENT)
 - FOUND NAIL AND DISK

PM SURVEYING
 4546 CAMBRIDGE STREET
 WEST PALM BEACH, FL. 33415
 (561) 478-7764 FAX 478-1094
 VISIT US AT PMSURVEYING.NET
 JOB # 18070006